

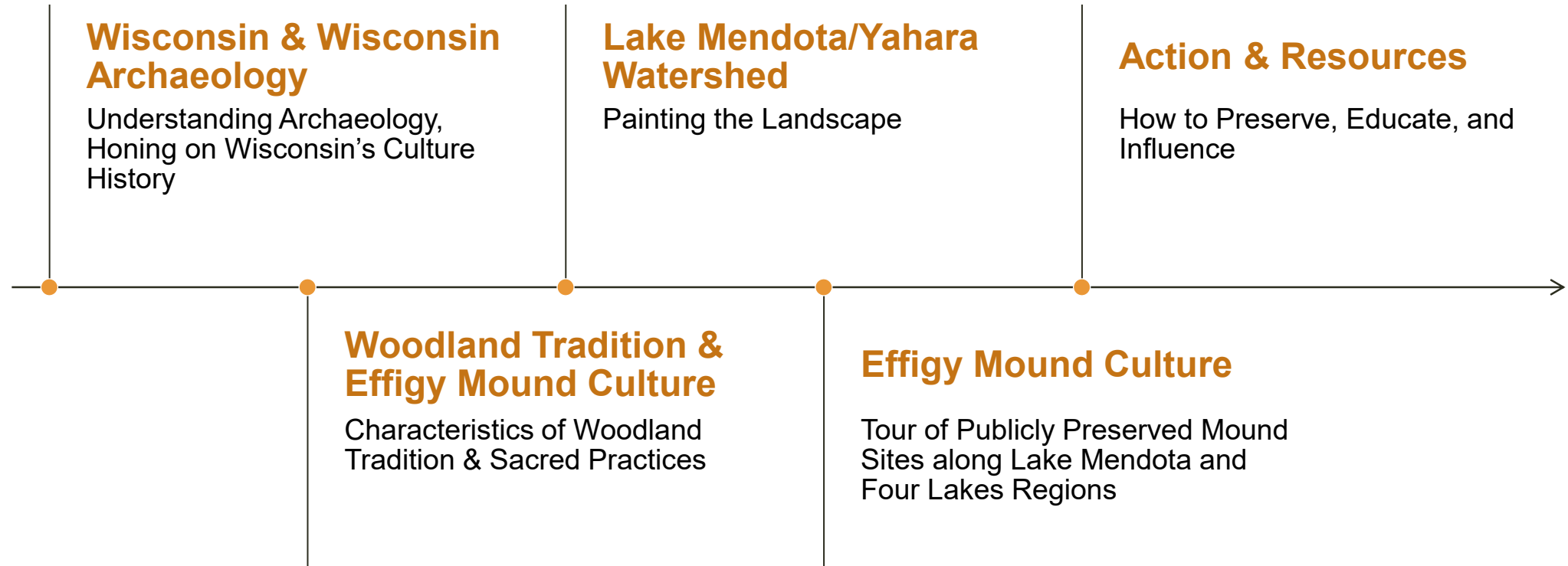


IN EFFIGY:  
AN ARCHAEOLOGICAL REVIEW OF LAKE  
MENDOTA AND THE FOUR LAKES REGION

SETH TAFT, EXECUTIVE DIRECTOR, FRIENDS  
OF WISCONSIN STATE PARKS



# Overview

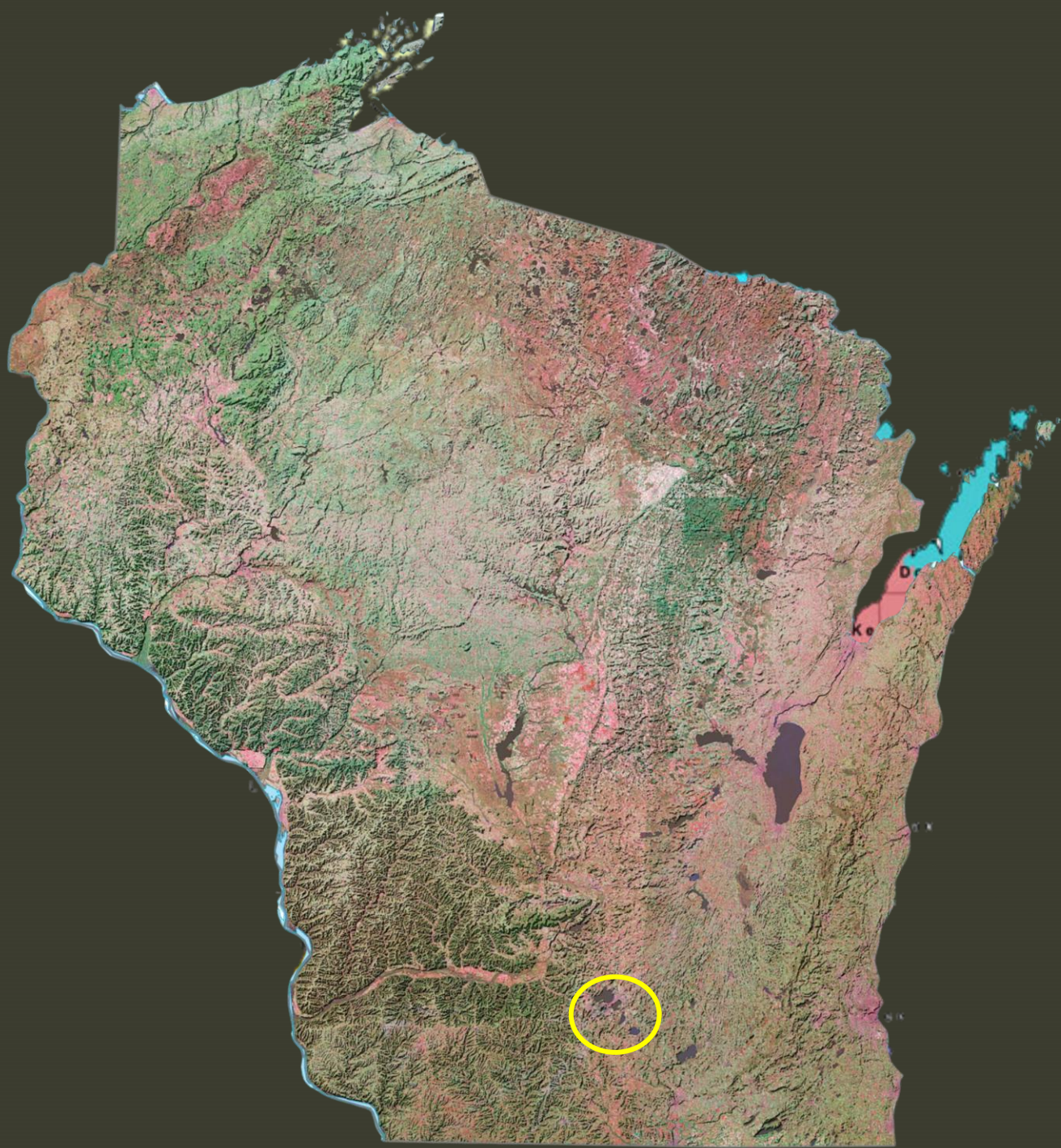


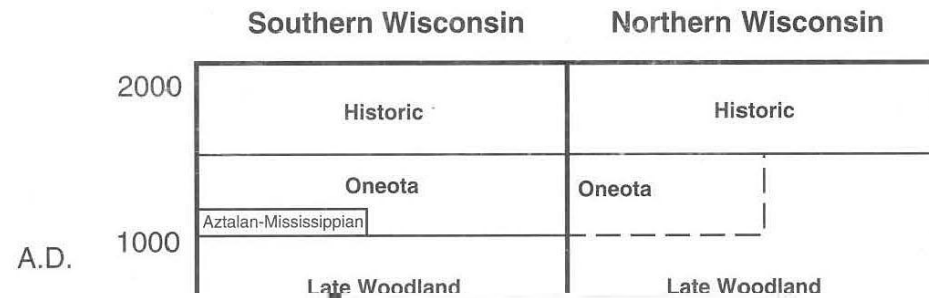
# ARCHAEOLOGY DEFINED

- SUBFIELD OF ANTHROPOLOGY
- STUDY OF HUMAN CULTURE THROUGH PAST MATERIAL REMAINS AND THEIR CONTEXT
  - ARTIFACTS, FEATURES, TELL A STORY

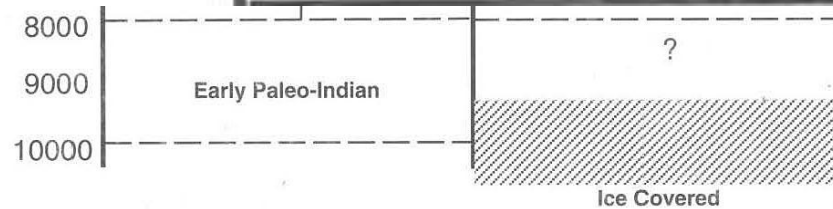








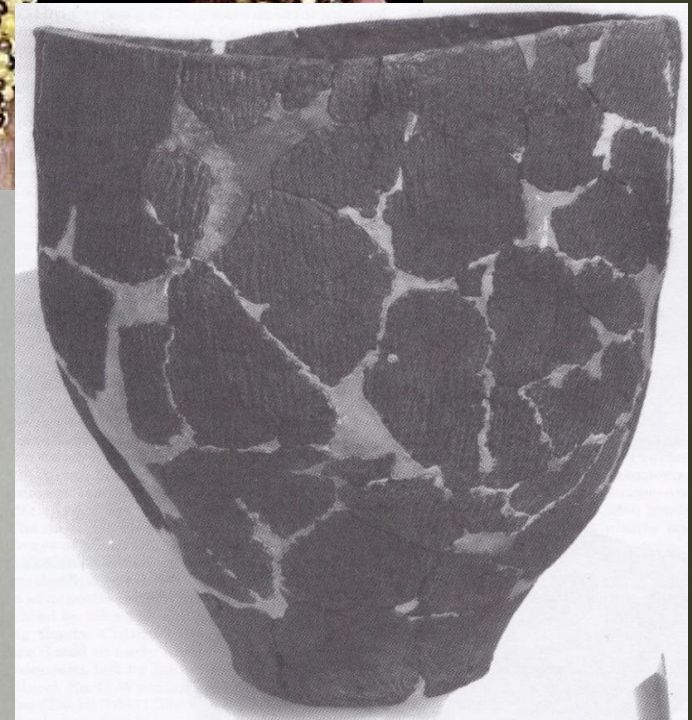
A.D.



Wisconsin Archaeological Stages

# WOODLAND TRADITION

- THREE STAGES
  - EARLY, MIDDLE, LATE
- 3KYA-1KYA
- ESTABLISHMENT OF CERAMICS
- PROJECTILE POINT SIZE DECREASES
  - BOW AND ARROW
- SOCIAL COMPLEXITY BOOMS
  - BURIAL MOUNDS
  - LARGE TRADE SPHERES
  - CEREMONIALISM
  - WARFARE



# EFFIGY MOUND CULTURE



Figure 7.16: Map of Effigy Mound distribution area, from Rowe (1966).

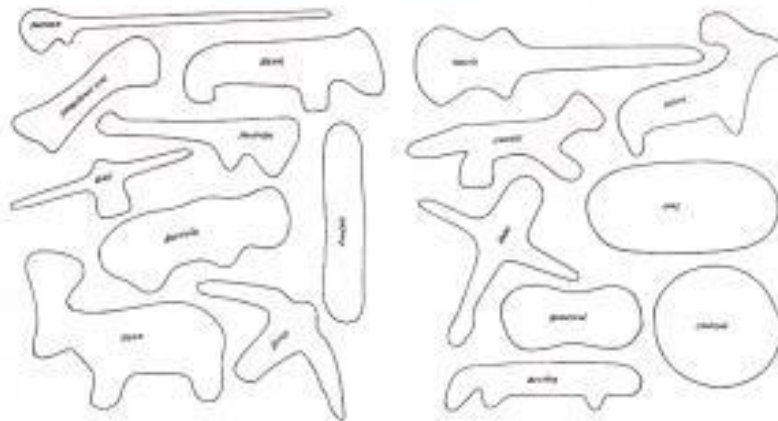


Figure 7.17: Some common effigy mound forms, from Rowe (1966).

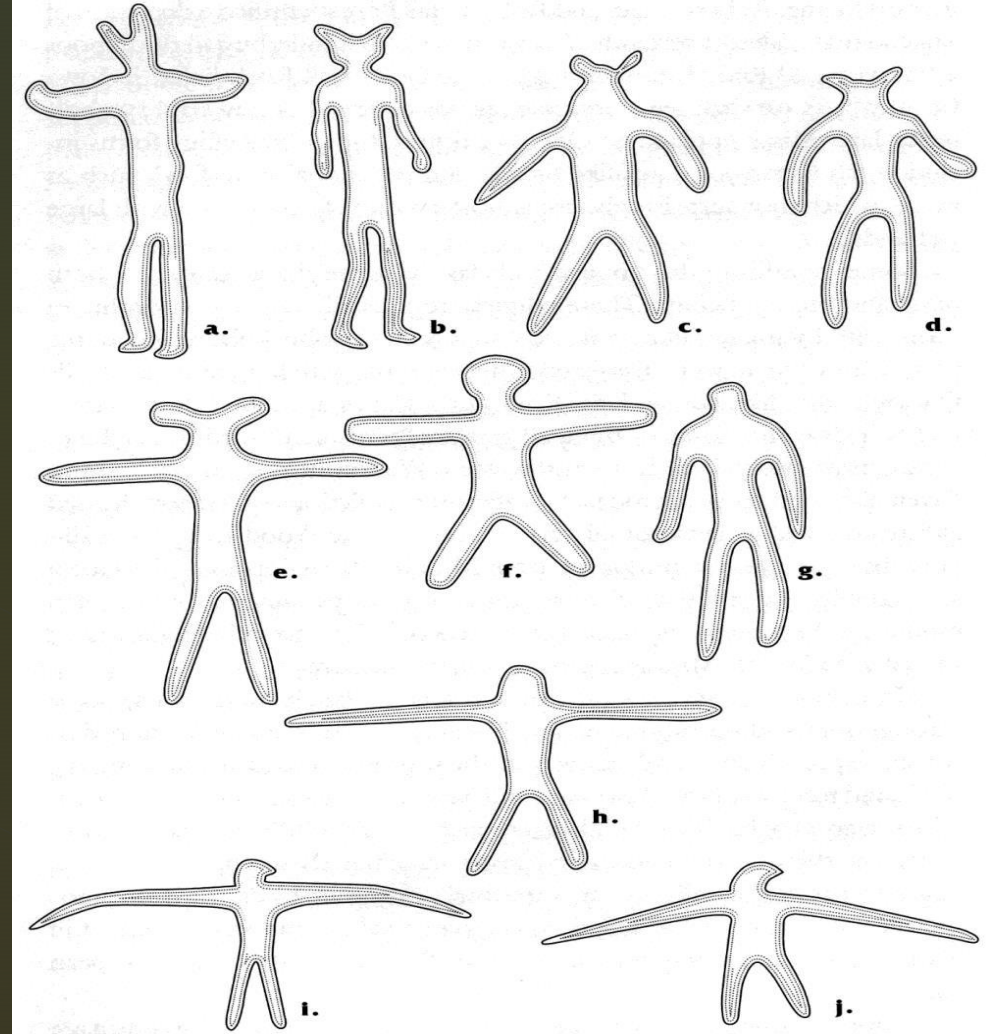
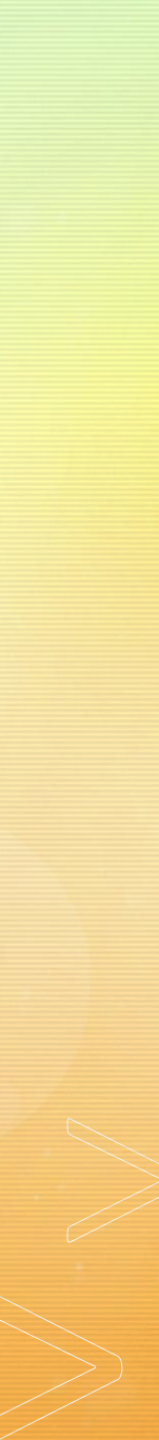
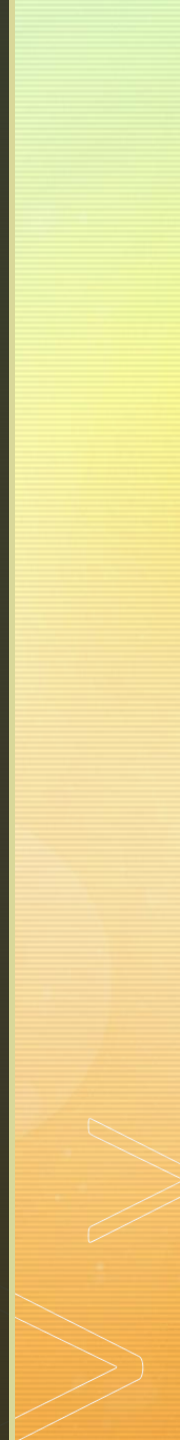
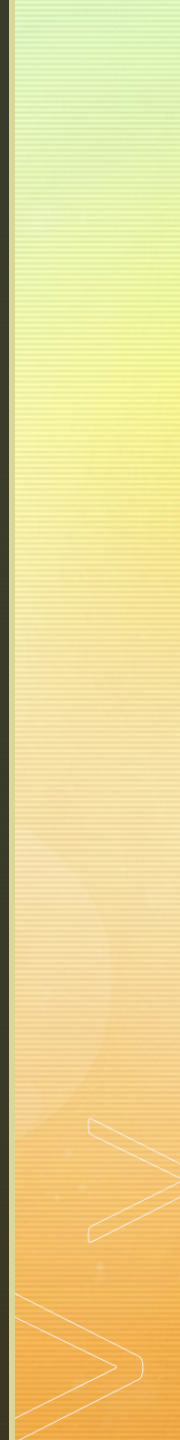


Figure 5.8. Effigy mounds in the shape of humans and bird-men: (a) Man Mound County Park, Sauk County; (b) La Valle Man Mound, Sauk County; (c-e, g, h, j) Eagle Township, Richland County; (f) near Mount Horeb, Dane County; (i) Devil's Lake State Park, Sauk County. (Drawing by Amelia Janes, Midwest Educational Graphics)









**Yahara River Watershed**

Sean Morrison 2021  
@mapping\_gnome

Map 1 Courtesy of  
Clean Lakes Alliance

Map 2 Courtesy of  
S. Morrison/Mapping Gnome



LAKE MENDOTA


Capitol building


LAKE MONONA

LAKE WINGRA

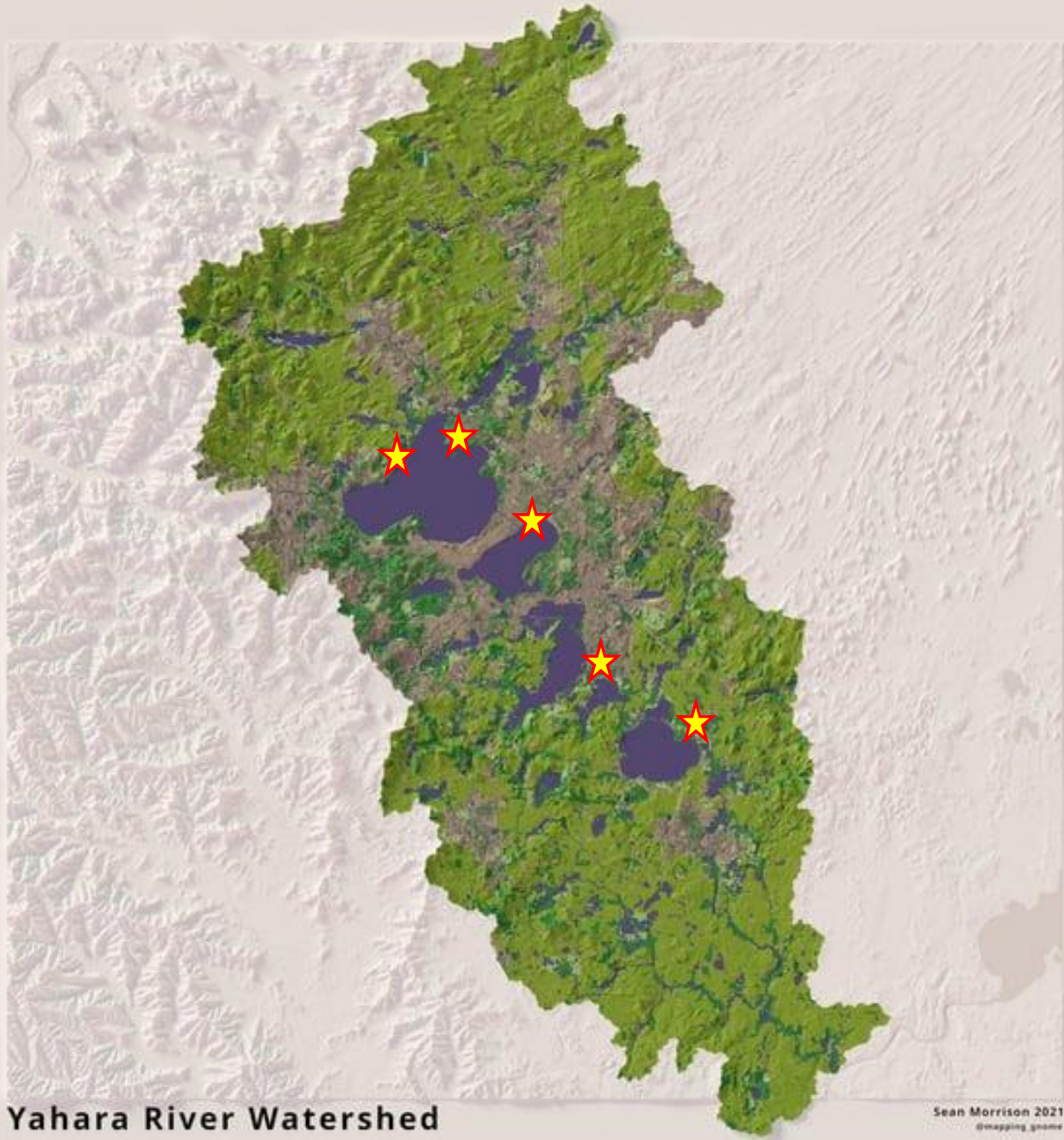
LAKE WAUBESA

### Glacial Lake Yahara

 Glacial lake Yahara

 Present-day lakes

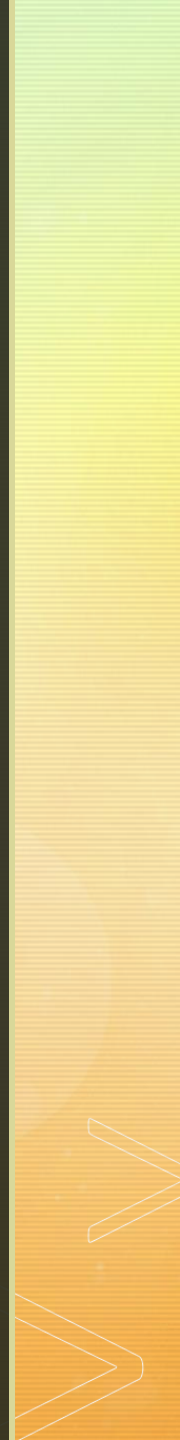
0 1 2 3  
miles

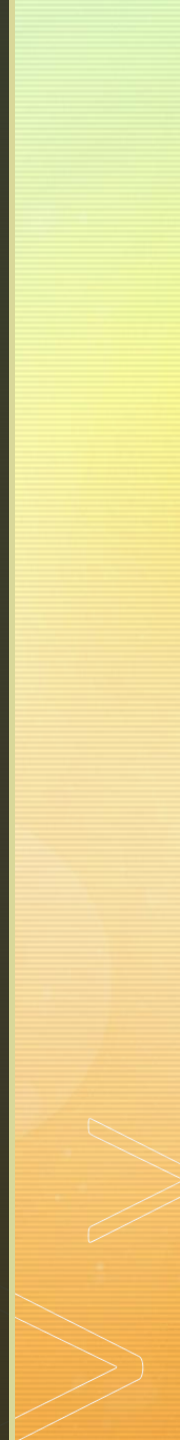


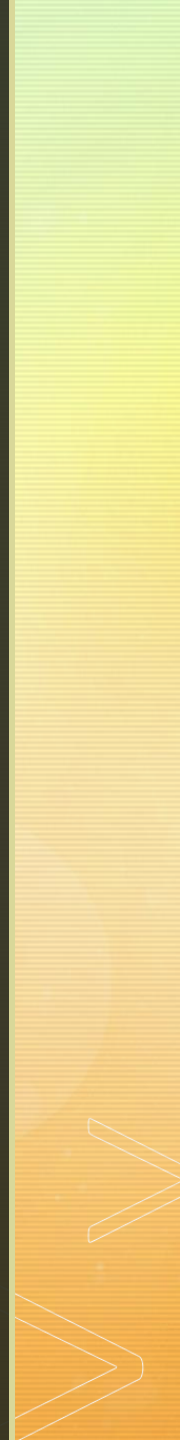
**Yahara River Watershed**

Sean Morrison 2021  
@mapping\_gnome











Images Courtesy of  
Wisconsin Historical Society Collections

# WHAT CAN YOU DO TO PRESERVE THE PAST FOR TODAY?

- PRESERVE AND PROTECT
  - LANDOWNERS = PROPERTY TAX EXEMPTION
  - SUPPORT LOCAL HISTORY
- VISIT OTHER SITES & SUPPORT ORGANIZATIONS
  - EFFIGY MOUNDS NATIONAL MONUMENT
  - WISCONSIN HISTORICAL SOCIETY
  - WISCONSIN ARCHEOLOGICAL SOCIETY



# ADDITIONAL RESOURCES

- WISCONSIN HISTORICAL SOCIETY – DIGITAL COLLECTIONS
- WISCONSIN HISTORICAL SOCIETY: ARCHAEOLOGY
- WISCONSIN ARCHEOLOGICAL SOCIETY
- WISCONSIN DNR BURIAL MOUNDS
- DANE COUNTY PARKS

# THANK YOU

- CLEAN LAKES ALLIANCE
- WISCONSIN HISTORICAL SOCIETY
  - SHPO OFFICE
  - ARCHIVE COLLECTIONS
- WISCONSIN ARCHEOLOGICAL SOCIETY
- DANE COUNTY PARKS

